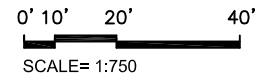
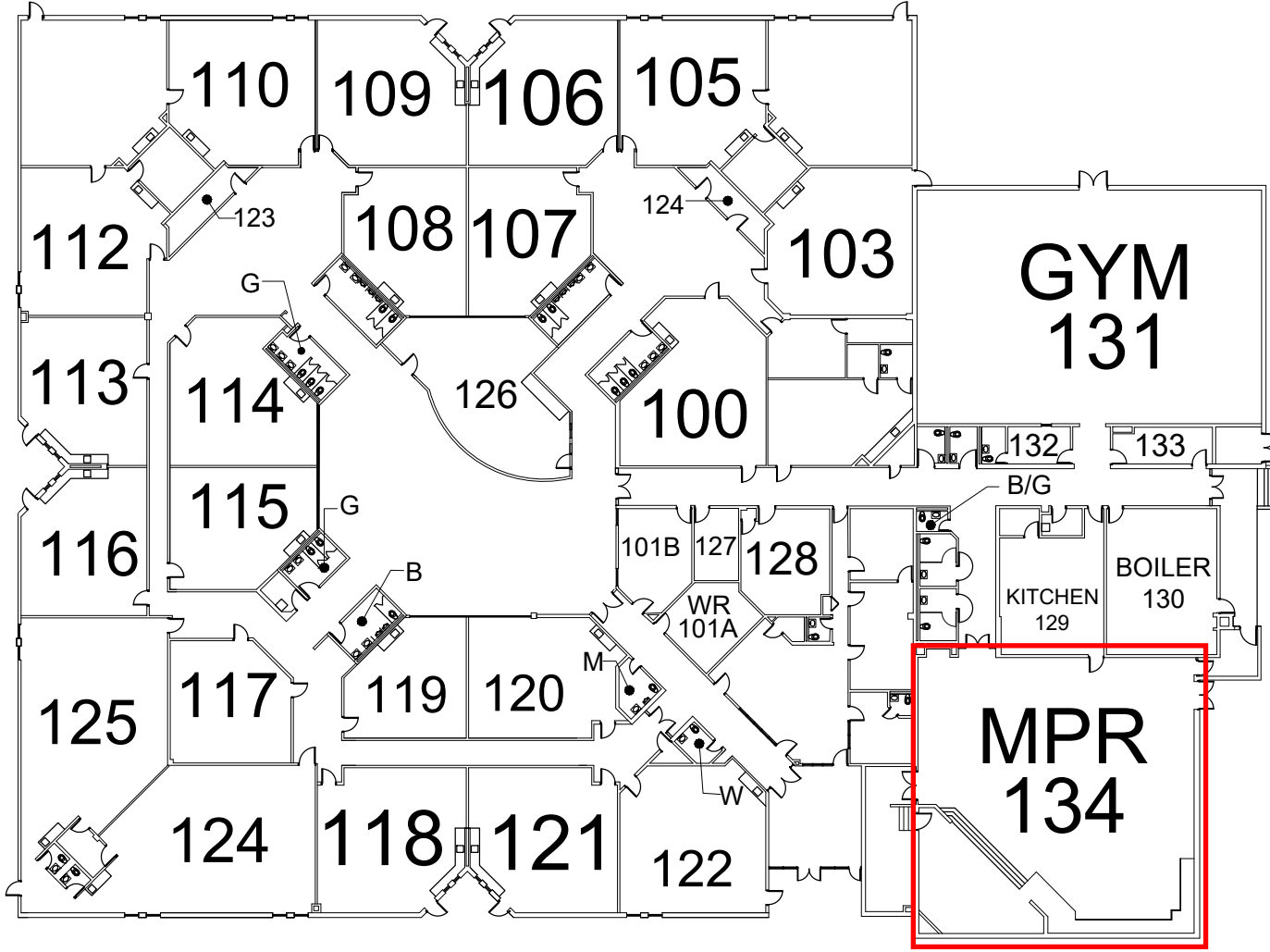


MAIN FLOOR PLAN



# LUCY BARNSLEY ELEMENTARY SCHOOL

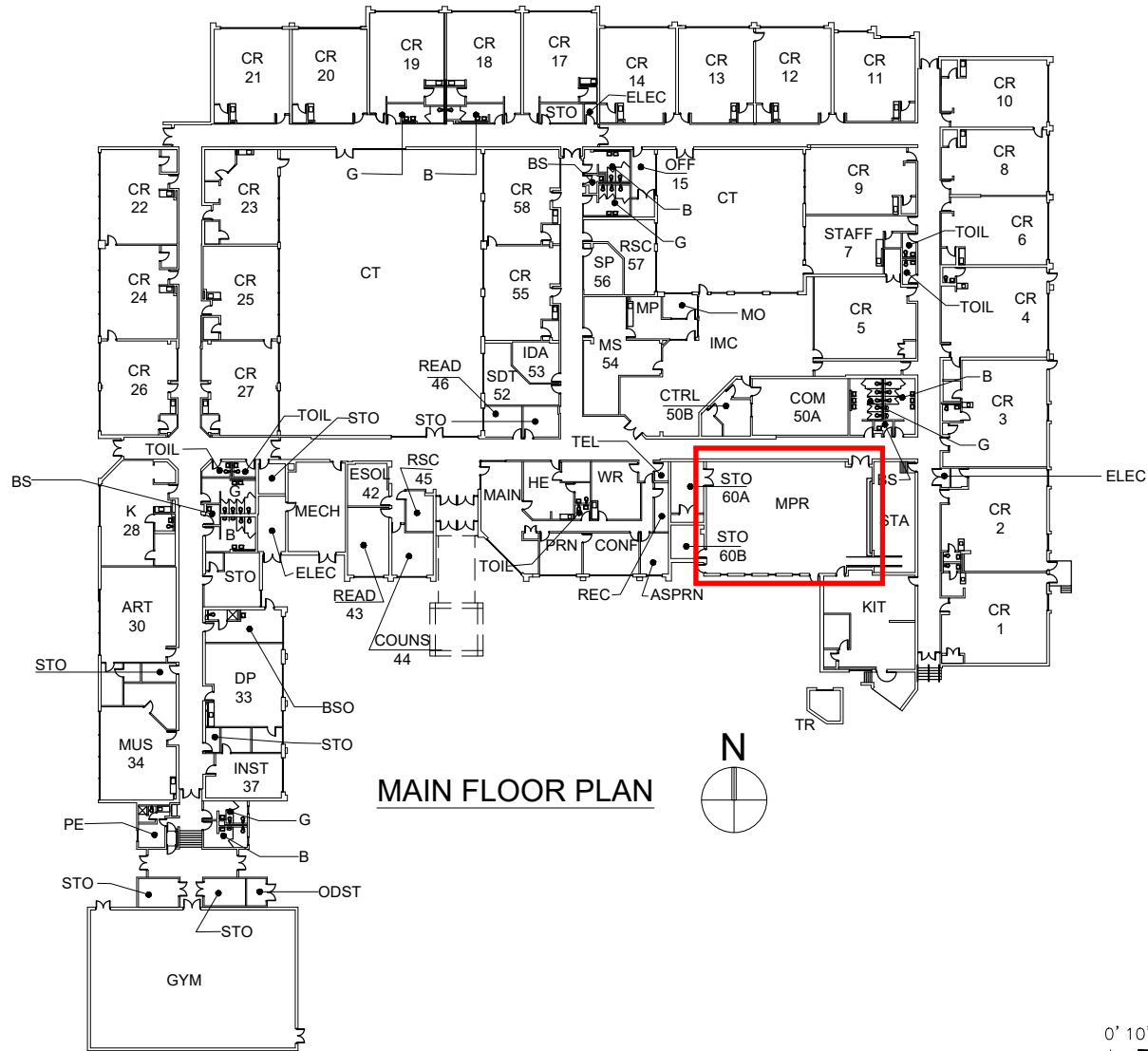




MAIN FLOOR PLAN





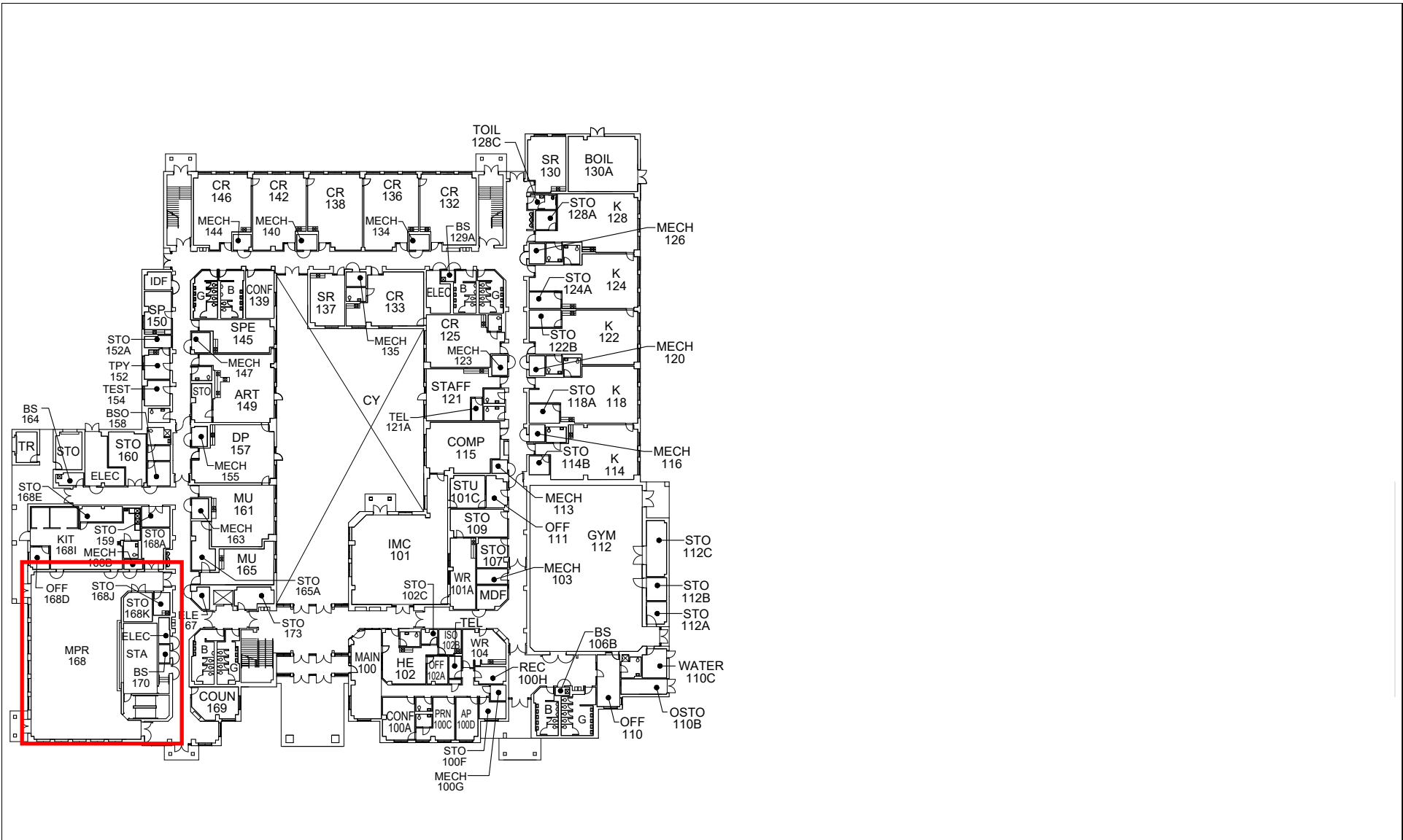


**MAIN FLOOR PLAN**

**BURTONSVILLE ELEMENTARY SCHOOL**

0' 10' 20' 40'  
 SCALE= 1:750

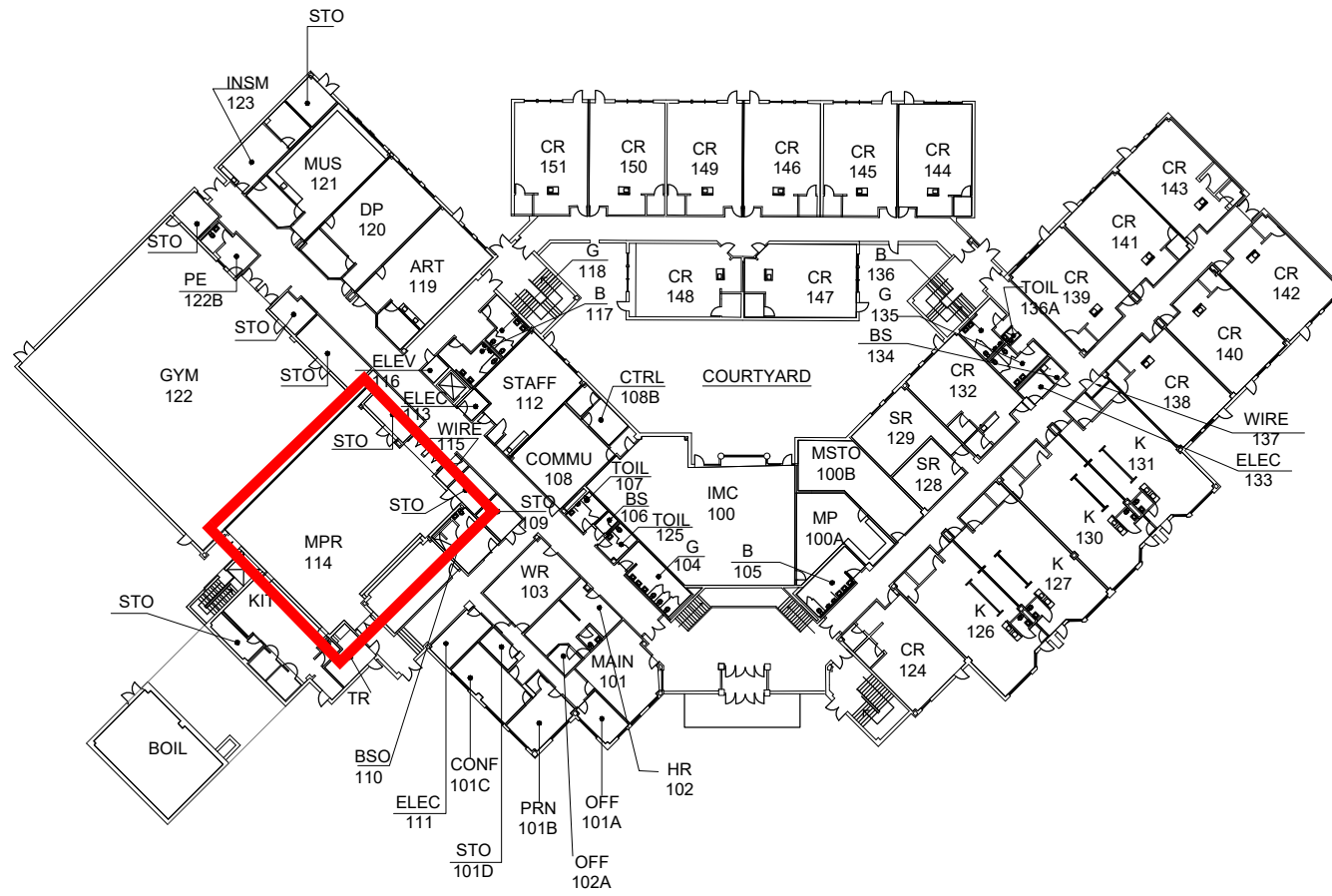
UPDATED  
 8/30/23



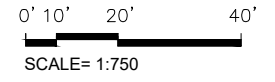
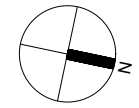
MAIN LEVEL FLOOR PLAN

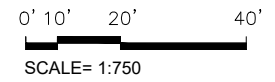
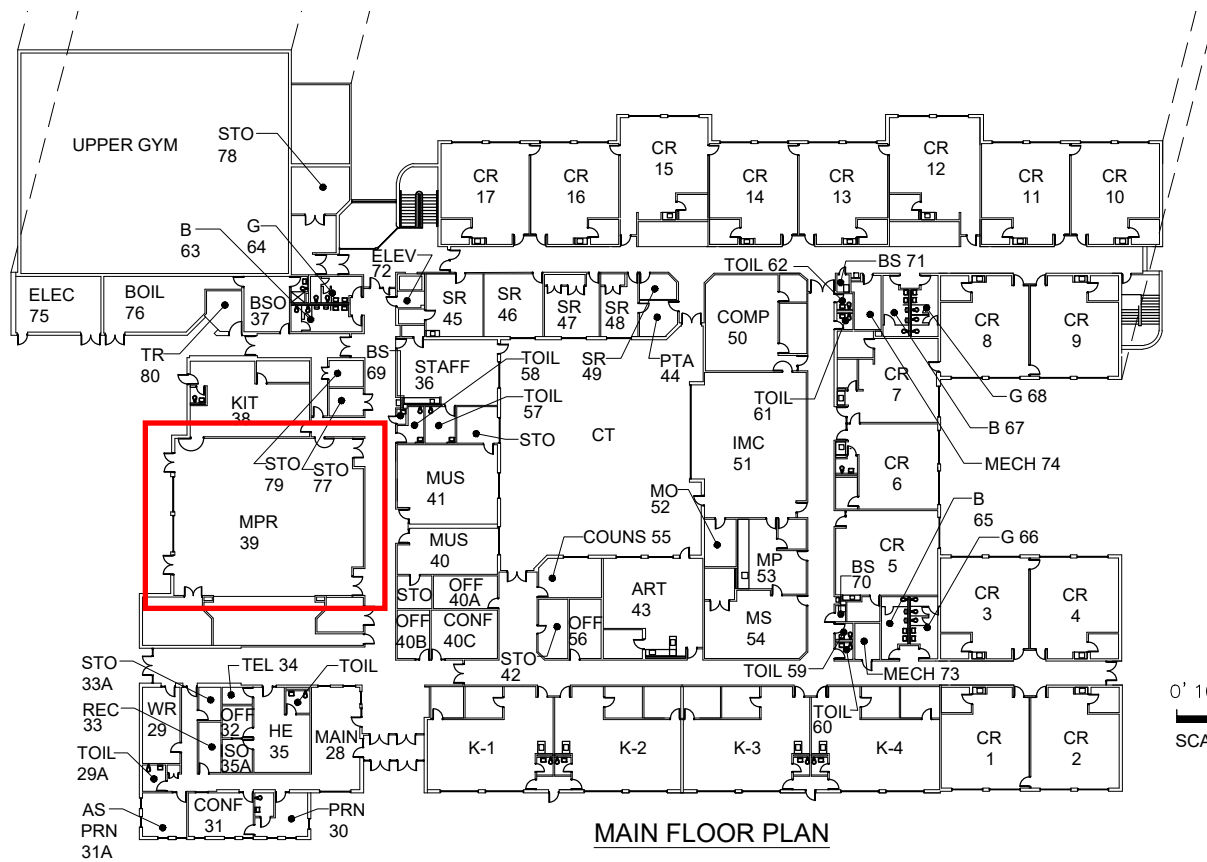


# CANDLEWOOD ELEMENTARY SCHOOL



MAIN FLOOR PLAN

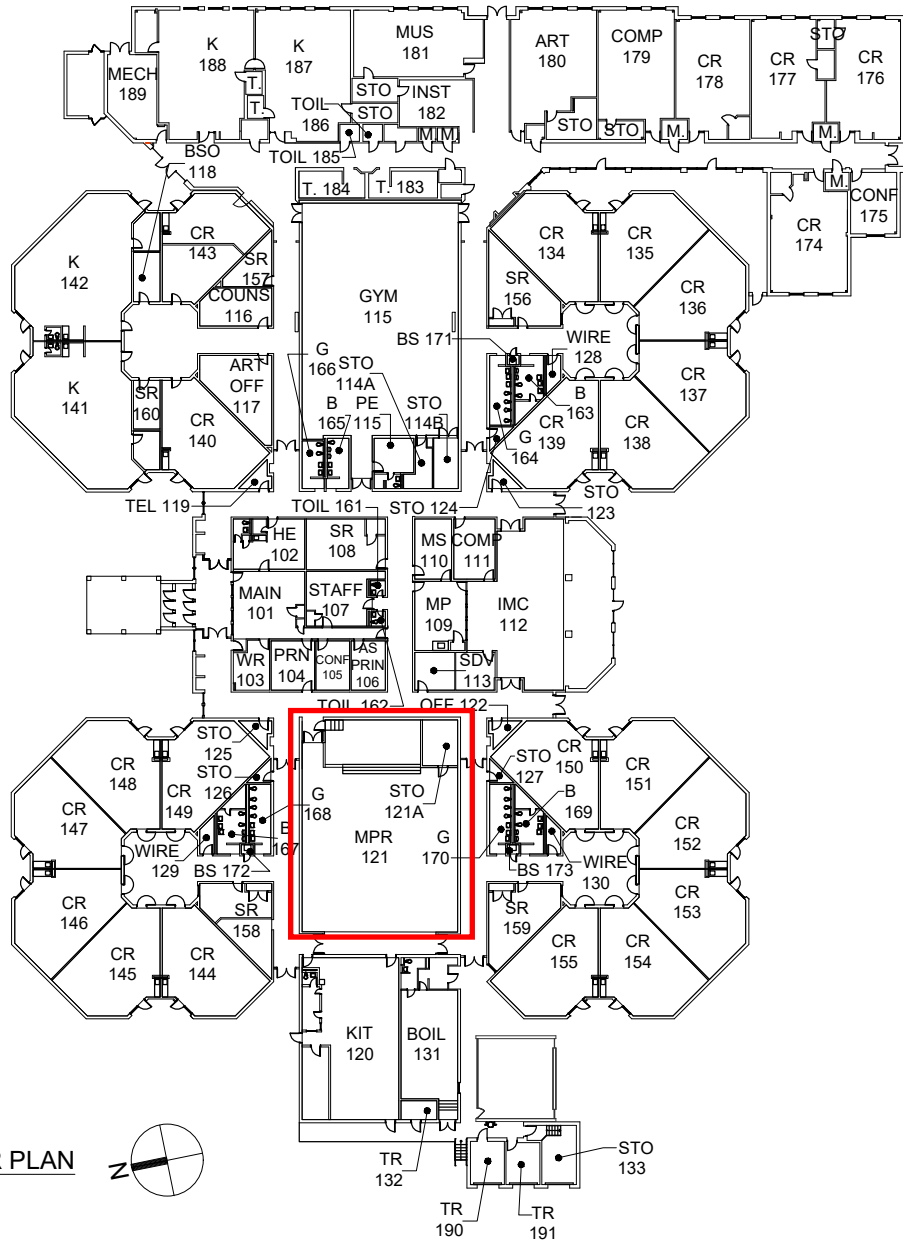




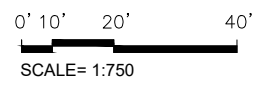
MAIN FLOOR PLAN

CLEARSPRING ELEMENTARY SCHOOL

UPDATED: 9/9/20

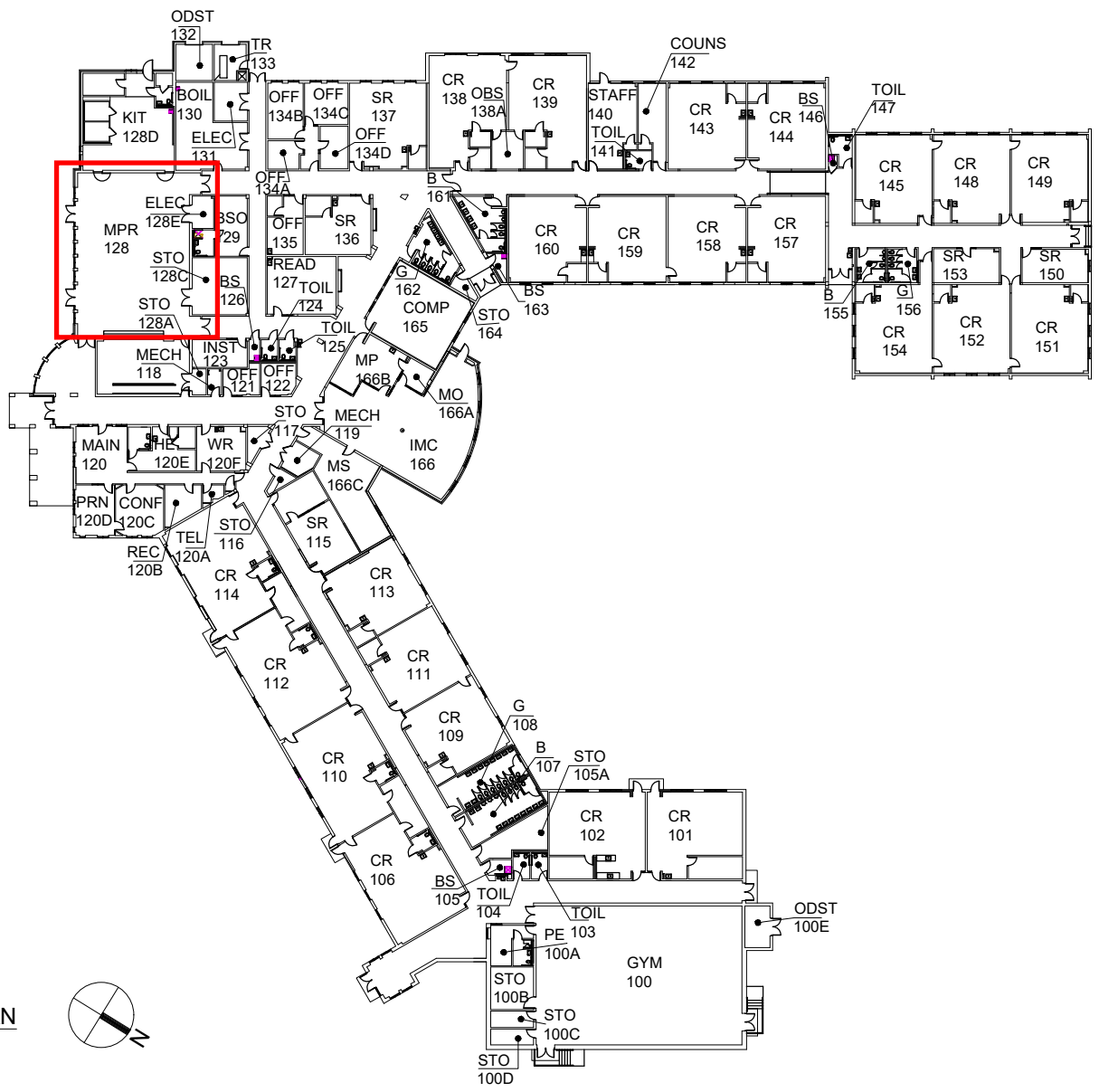


MAIN FLOOR PLAN

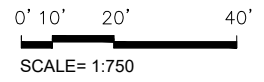
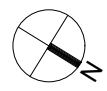


FALLSMEAD ELEMENTARY SCHOOL

UPDATED: 4/9/20

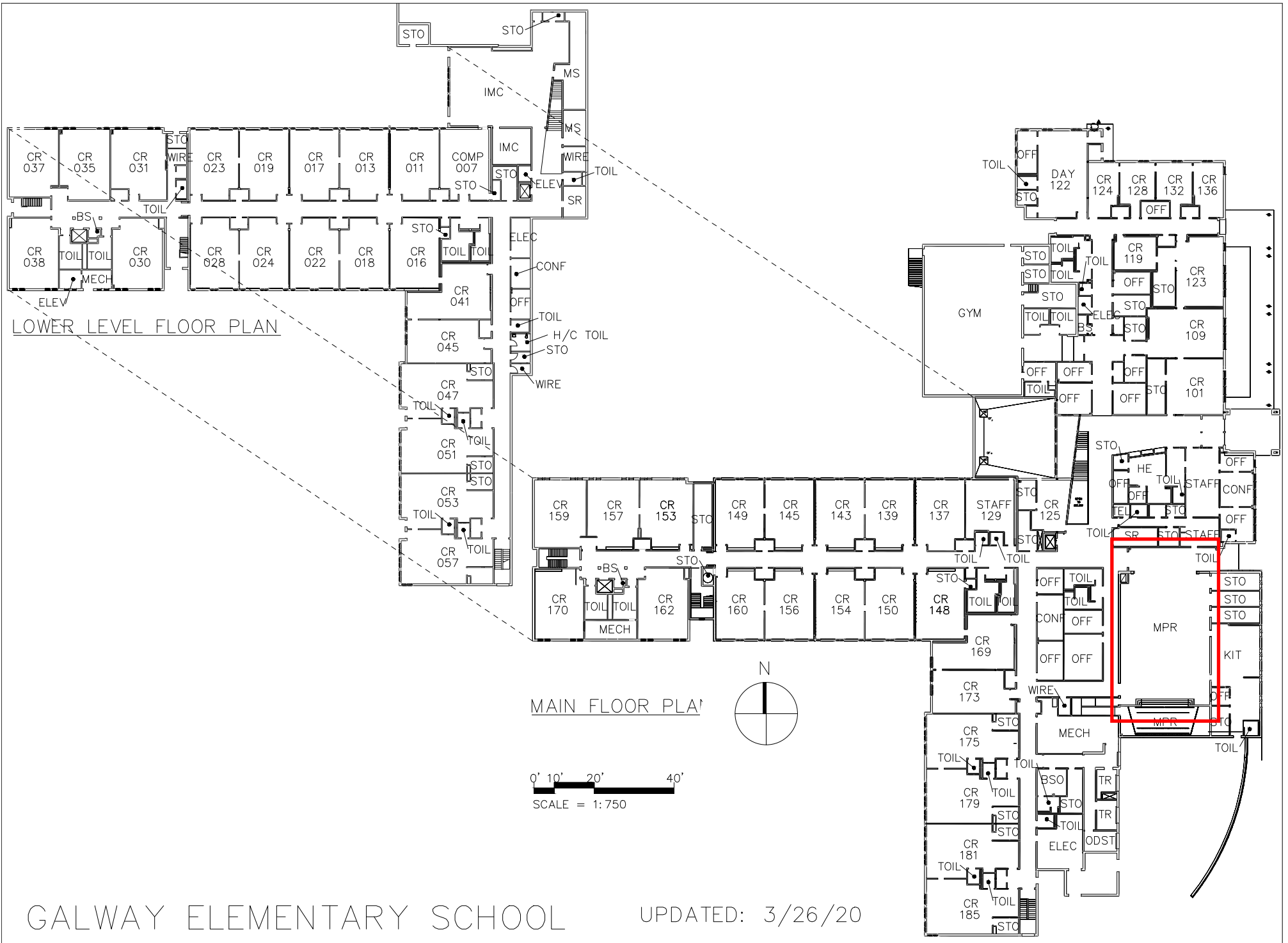


MAIN FLOOR PLAN



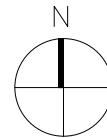
FLOWER VALLEY ELEMENTARY SCHOOL

UPDATED: 3/23/20



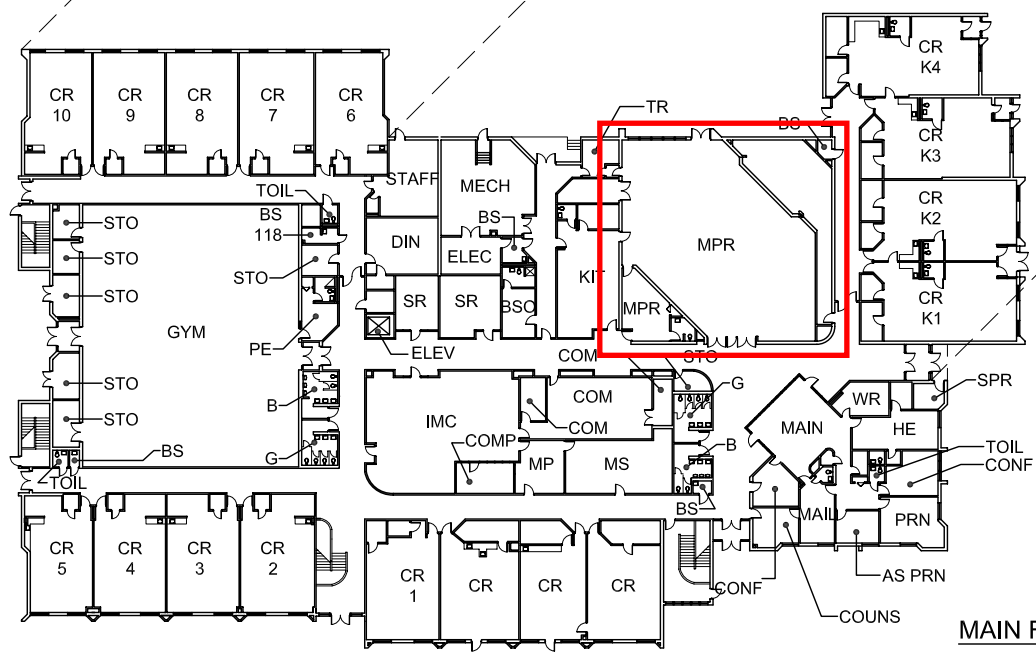
LOWER LEVEL FLOOR PLAN

MAIN FLOOR PLAN



0' 10' 20' 40'  
SCALE = 1:750



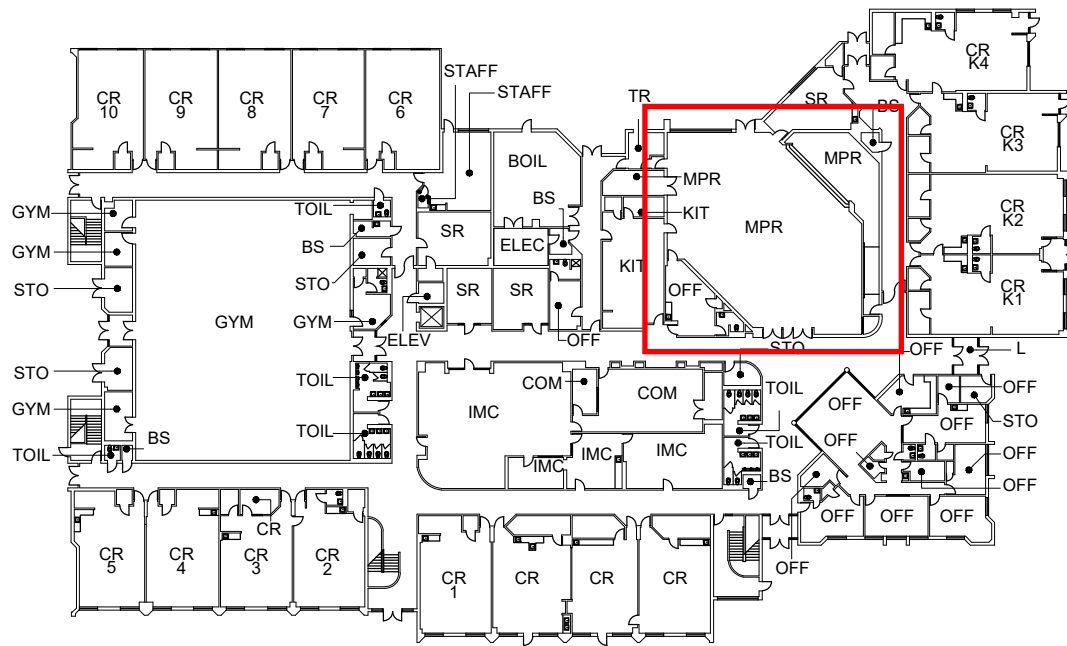


GOSHEN ELEMENTARY SCHOOL

MAIN FLOOR PLAN



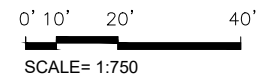
0' 10' 20' 40'  
SCALE= 1:750

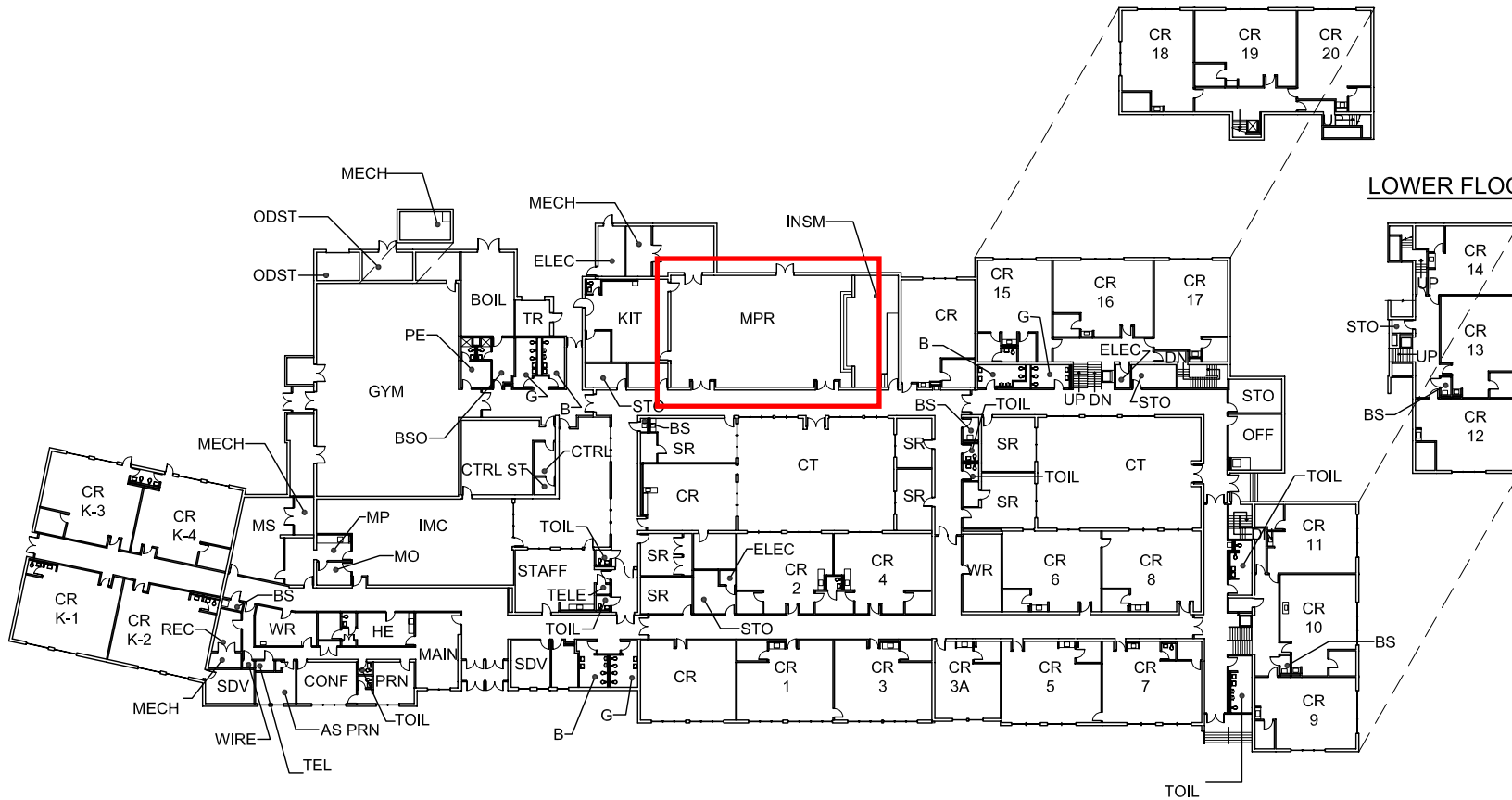


MAIN FLOOR PLAN



# GREENCASTLE ELEMENTARY SCHOOL

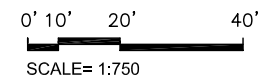




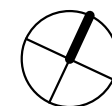
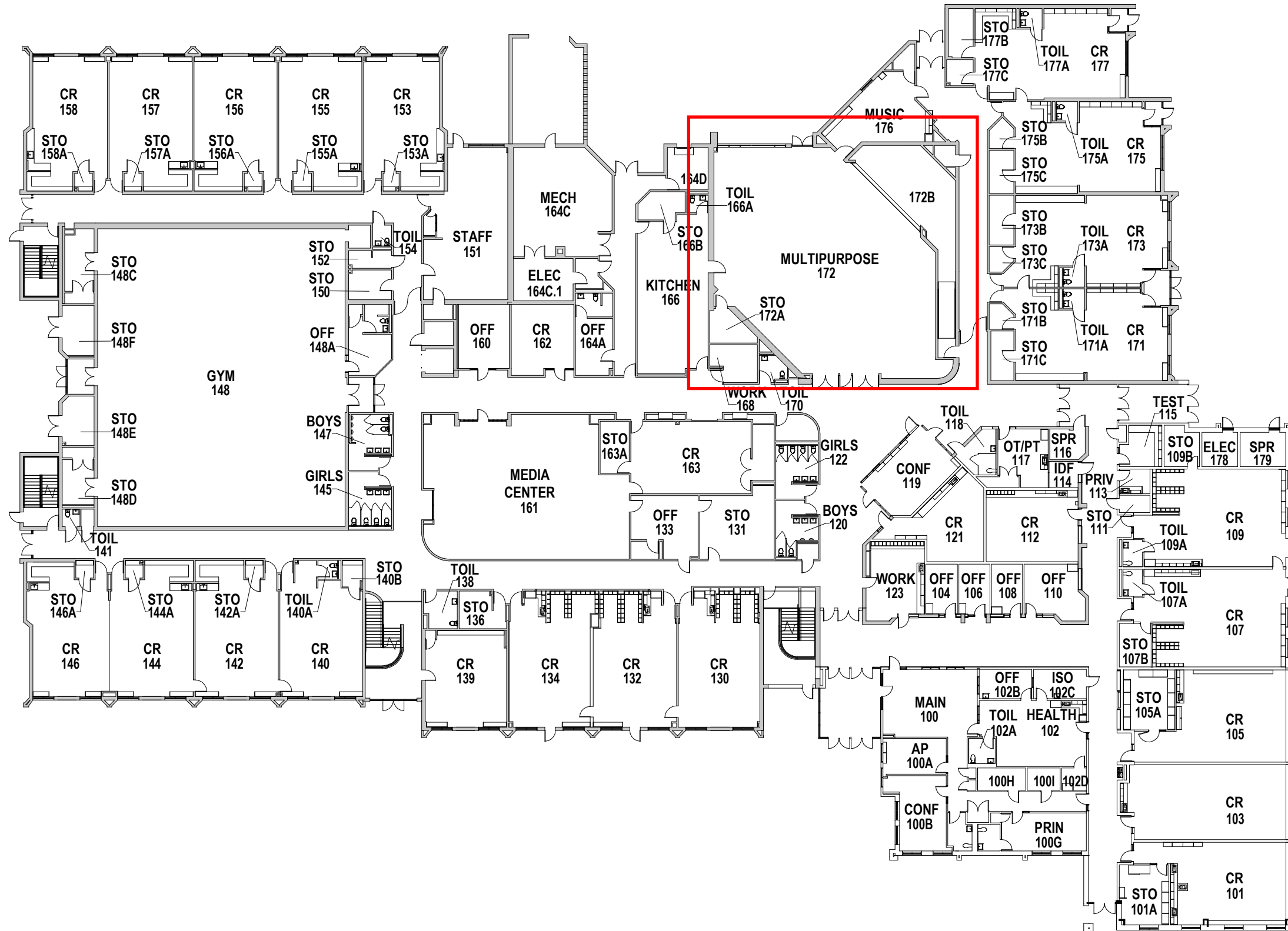
MAIN FLOOR PLAN

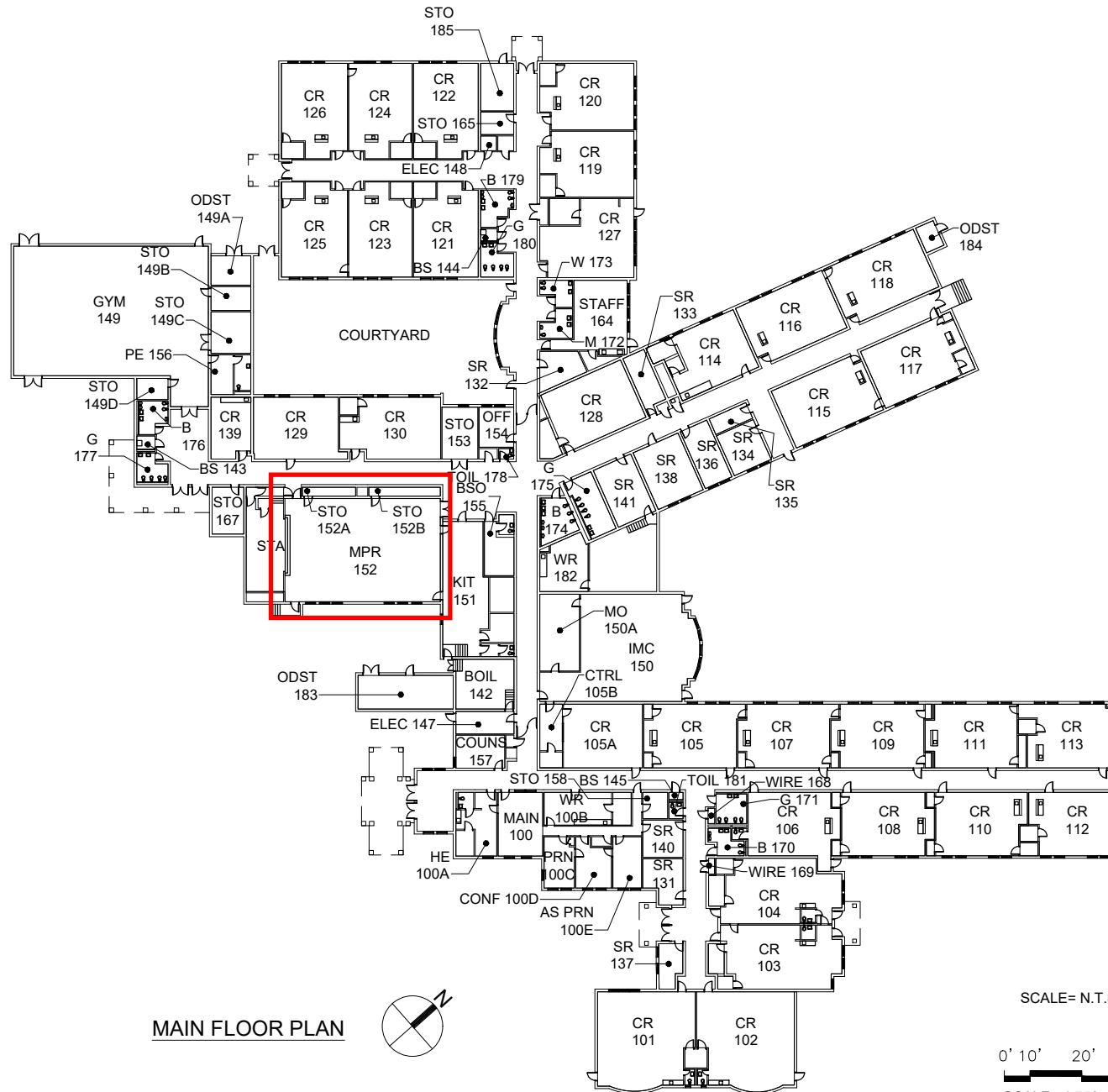


LOWER FLOOR PLAN



# LAYTONVILLE ELEMENTARY SCHOOL

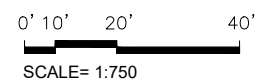




MAIN FLOOR PLAN



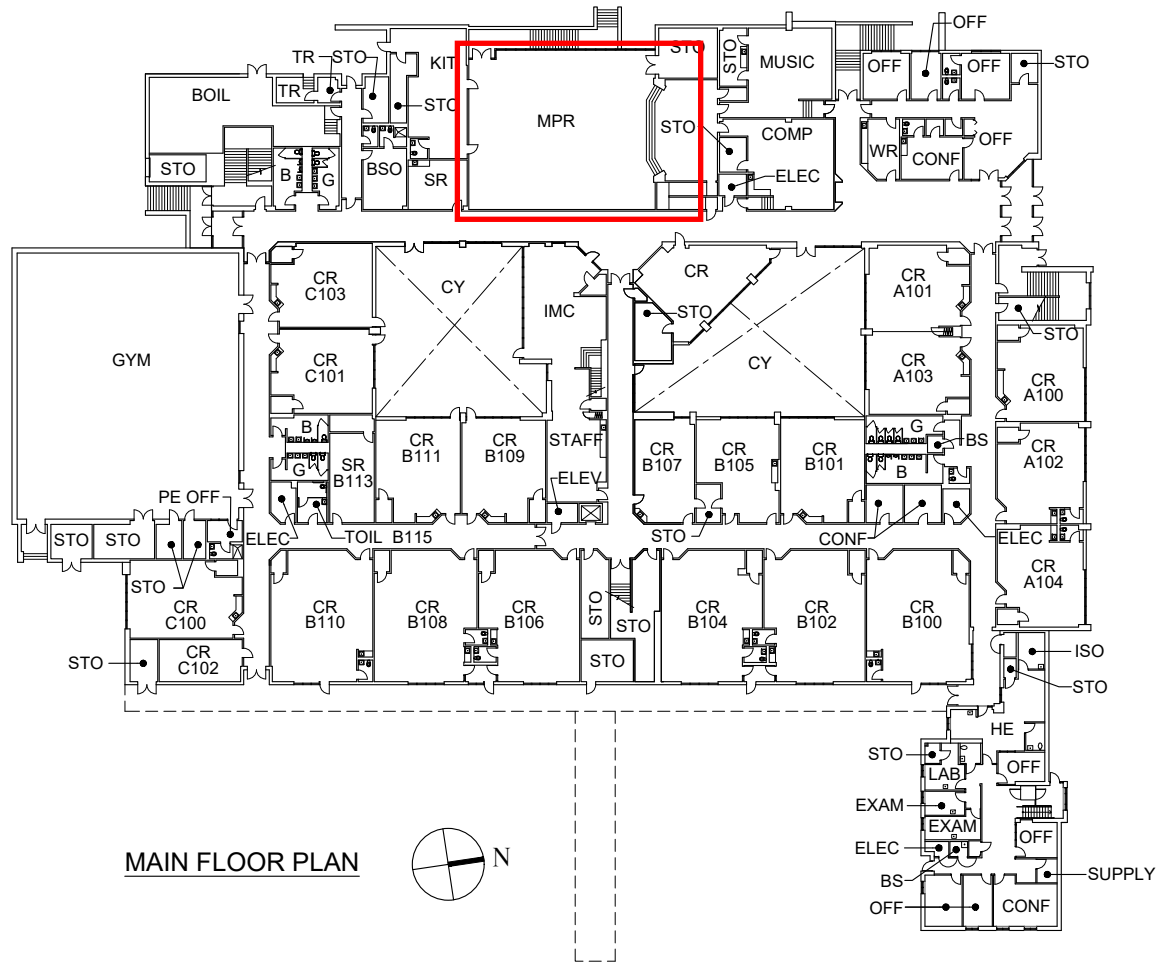
SCALE= N.T.S.



# OLNEY ELEMENTARY SCHOOL

UPDATED: 3/31/20



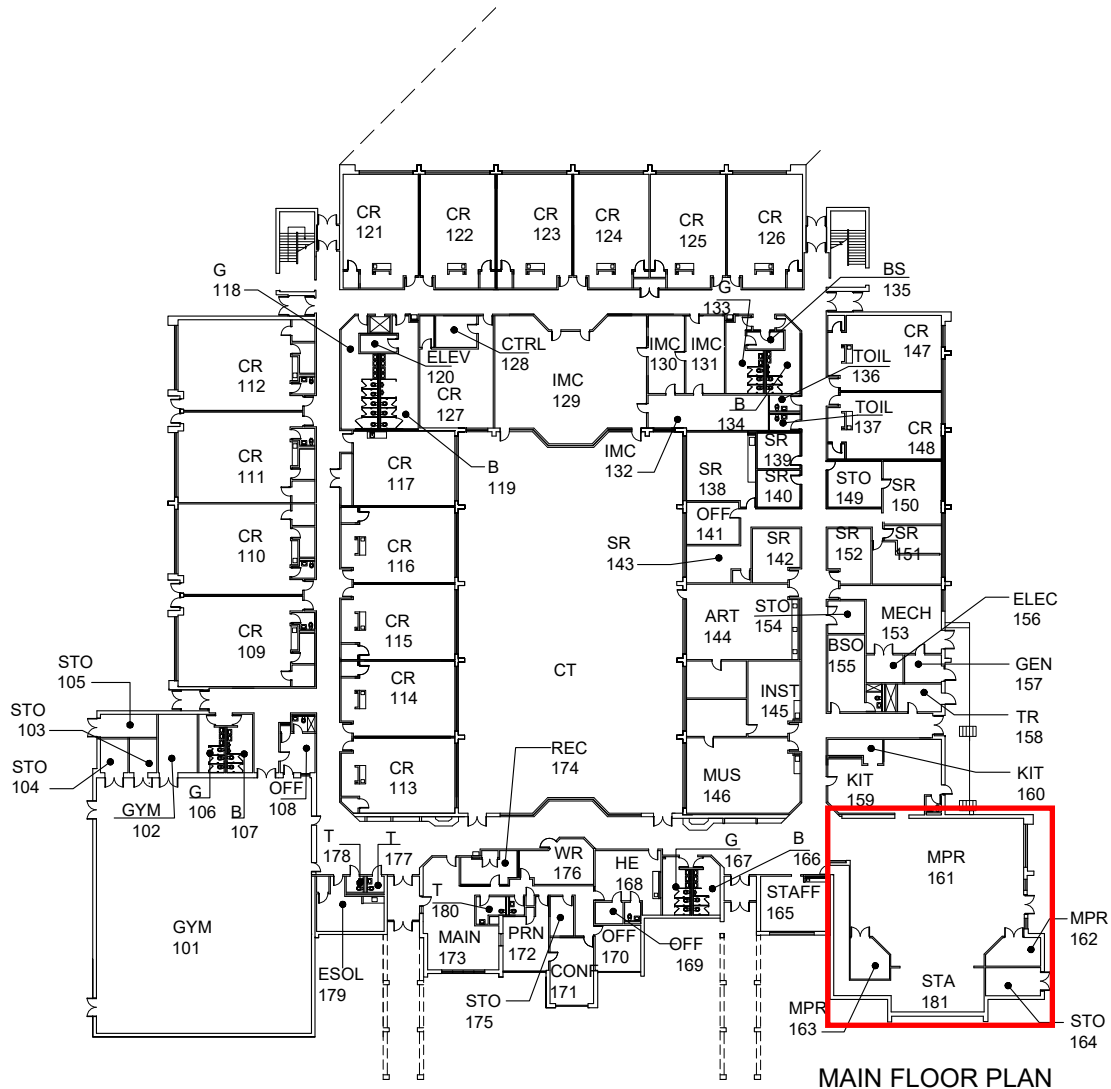


MAIN FLOOR PLAN



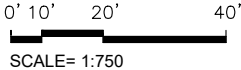
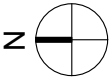
0' 10' 20' 40'  
SCALE= 1:750

ROLLING TERRACE ELEMENTARY SCHOOL

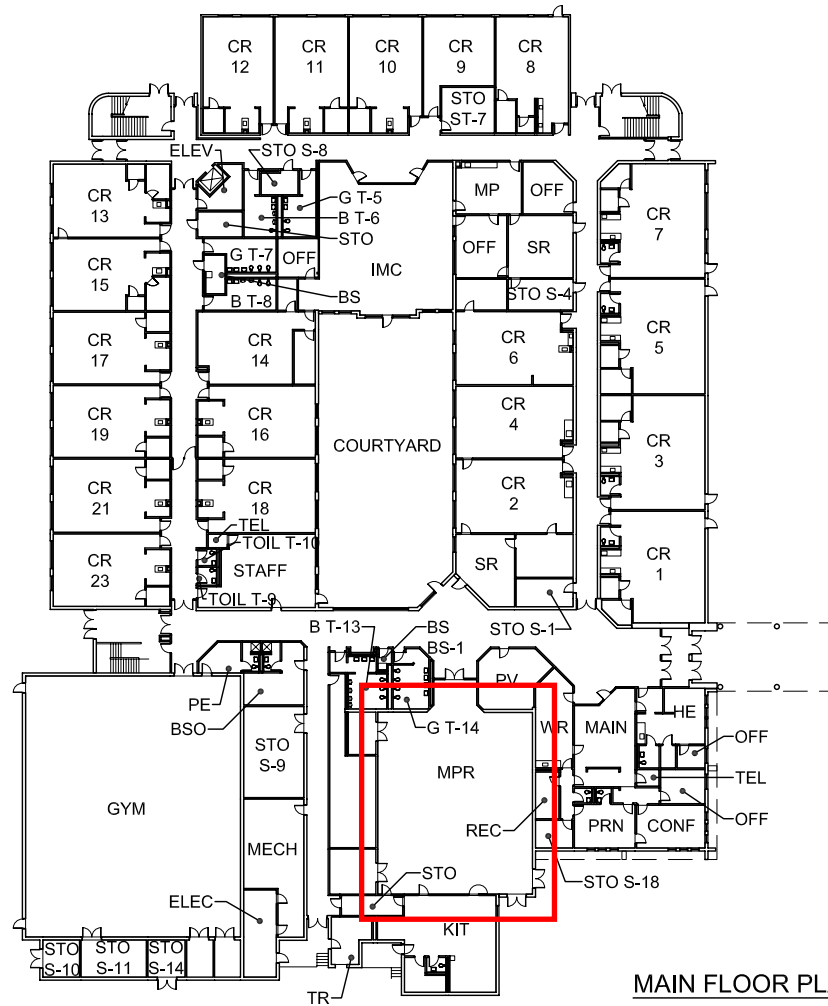


MAIN FLOOR PLAN

SEQUOYAH ELEMENTARY SCHOOL





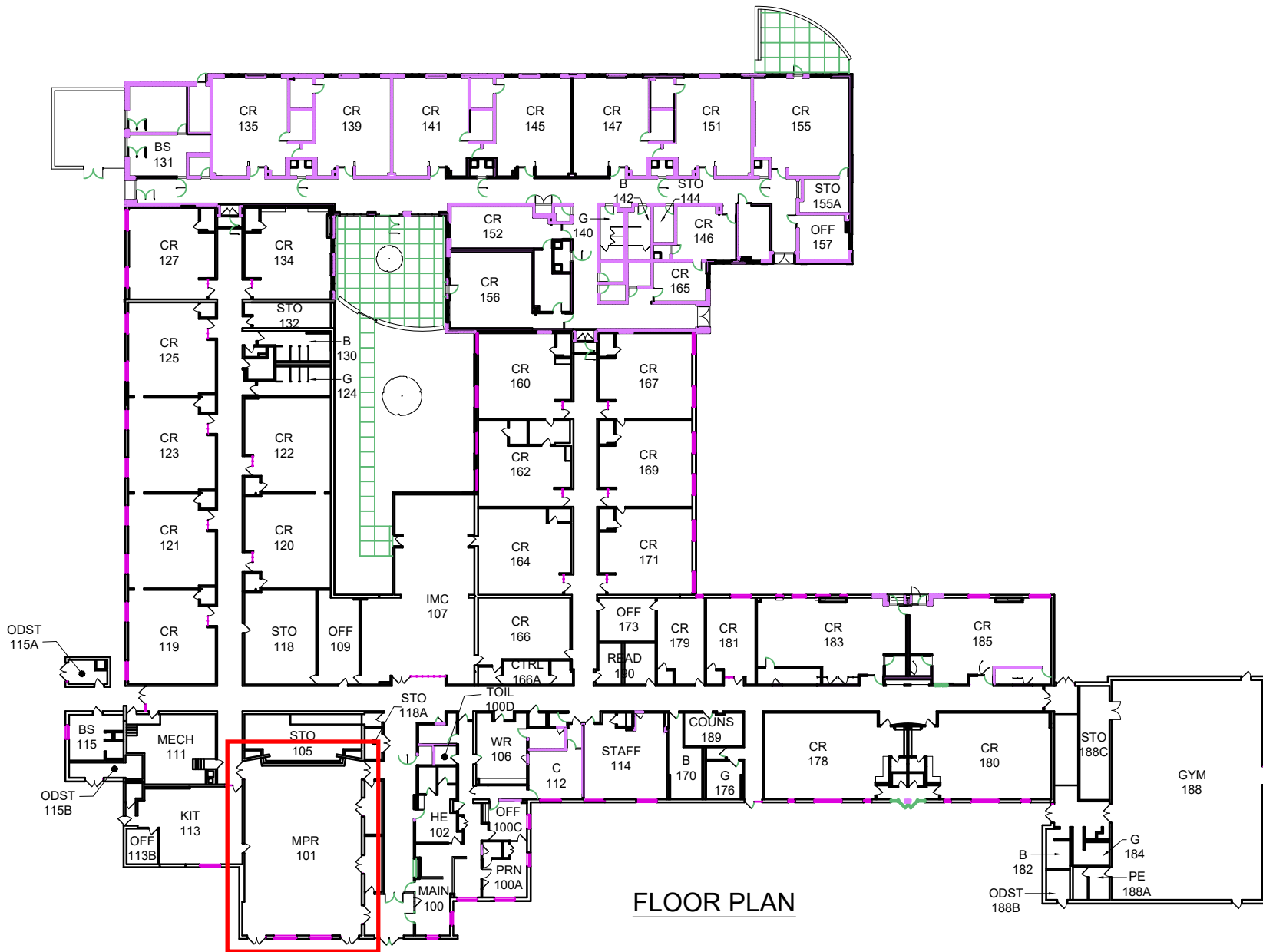


MAIN FLOOR PLAN



0' 10' 20' 40'  
SCALE= 1:750

# STONE MILL ELEMENTARY SCHOOL



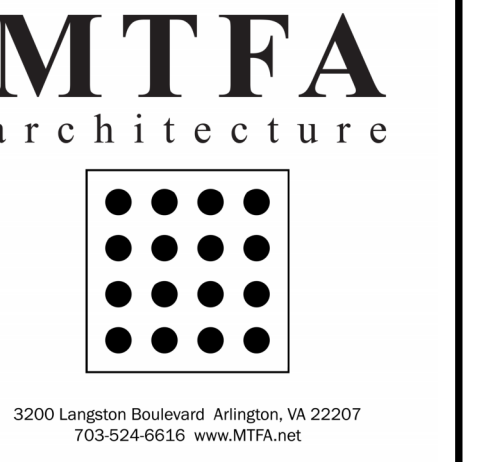
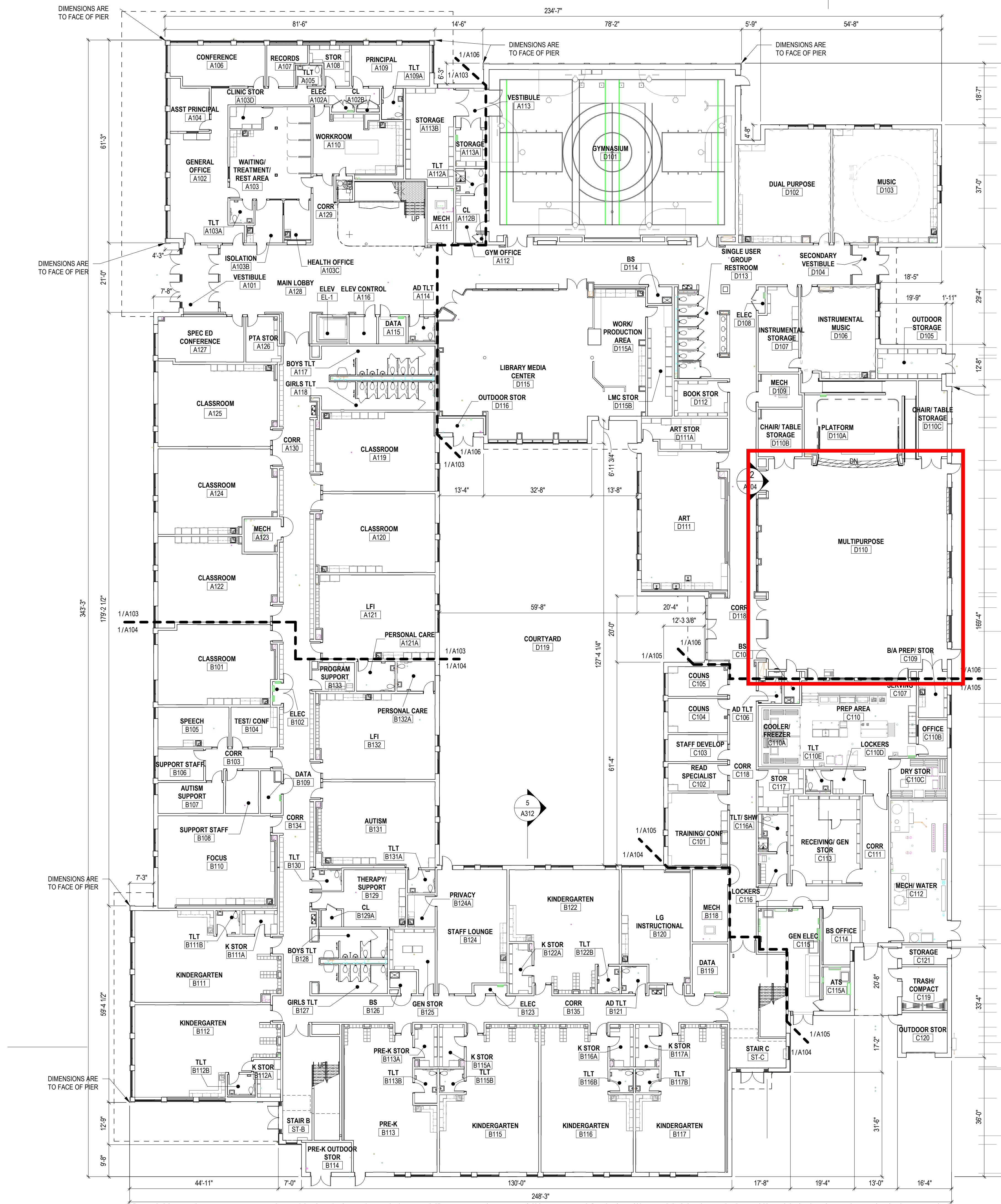
FLOOR PLAN

TRAVILAH ELEMENTARY SCHOOL

UPDATED: 4/3/20

**\*\*BURTONSVILLE  
ELEMENTARY SCHOOL  
REPLACEMENT**

The approved Burtonsville Elementary School replacement project will relocate the school to a new site. The replacement school has an anticipated completion date of August 2026. Please see Attachment A for more information.



**BURTONSVILLE  
ELEMENTARY  
SCHOOL**

MSDE - PUBLIC SCHOOL  
CONSTRUCTION PROGRAM  
(PSCP)#15.285

MONTGOMERY COUNTY  
PUBLIC SCHOOLS  
14709 SADDLE CREEK DR.  
BURTONSVILLE, MD 20866

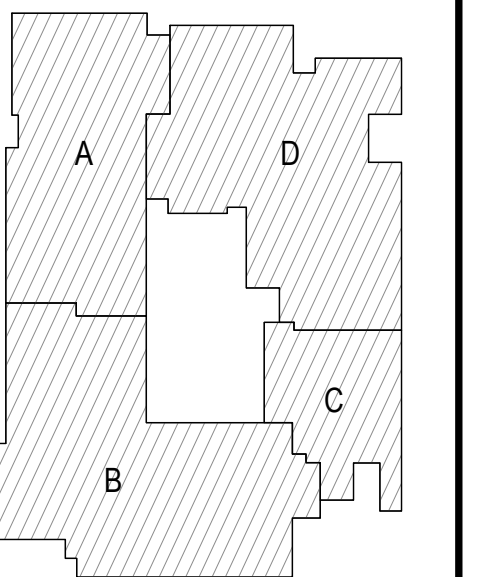
CIVIL  
CLARK I AZAR & ASSOCIATES, INC.  
2040 CENTURY BLVD, SUITE 200  
GERMANTOWN, MD 20874  
703.718.4335

STRUCTURAL  
LINTON ENGINEERING  
4800 LAKE CENTER PLAZA, SUITE 309  
POTOMAC FALLS, VA 20166  
571.323.0320

MEP / FP  
JAMES POSEY ASSOCIATES  
1155 RED RUN BOULEVARD, SUITE 310  
BALTIMORE, MD 21117  
410.265.6100

FOOD SERVICE  
NYIKOS-GARCIA  
7146 STARMOUNT WAY  
NEW MARKET, MD 21774  
240.683.9530

ACOUSTICS  
POLYSONICS  
405 BELLE AIR LANE  
WARRINGTON, VA 20186  
540.341.4988



**KEYPLAN**

PROJECT # 23029

DATE:	ISSUE:
1/10/23	10% CD SUBMISSION
02/15/24	DESIGN DEVELOPMENT
06/04/24	65% CD SUBMISSION
07/25/24	95% CD SUBMISSION
08/30/24	BID SET



PROFESSIONAL CERTIFICATION:  
I CERTIFY THAT THESE DRAWINGS WERE  
PREPARED OR APPROVED BY ME, AND THAT  
I AM A DULY LICENSED ARCHITECT UNDER  
THE LAWS OF THE STATE OF MARYLAND.  
LICENSE NUMBER: 0006641  
EXPIRATION DATE: 07/03/2026

DRAWN: MS  
CHECKED: EP  
SCALE: AS INDICATED

SHEET TITLE:  
**OVERALL FIRST FLOOR  
PLAN**

© MTF 2024 ALL RIGHTS RESERVED  
SHEET #